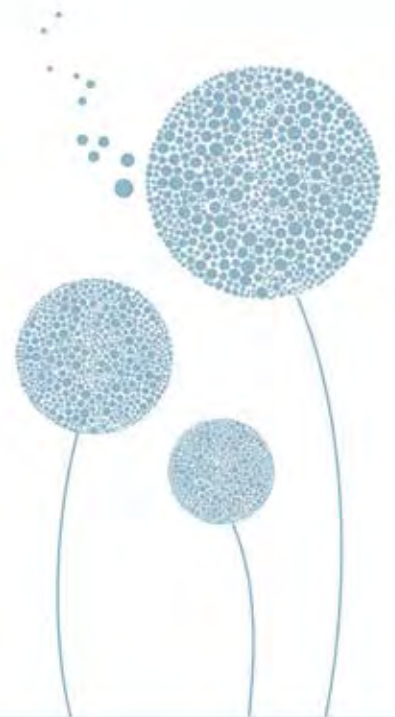




**TOGETHER...
WE ARE GROWING EVERY DAY...
BUILDING FOR TODAY AND TOMORROW.**



**SUPPORTING THE CHARITABLE WORK OF
THE JUNIOR LEAGUE OF MIAMI, INC.**

JOIN US!

Your charitable contribution to the Junior League of Miami Foundation, Inc. (JLMF) helps ensure the financial future of the Junior League of Miami, Inc. (JLM) for generations to come and helps continue the important role we serve in our Miami community as advocates for voluntarism and community engagement. The Junior League of Miami Foundation was created in 2004 as a not-for-profit 501(c)(3) organization.

The Junior League of Miami serves families at risk with projects and activities addressing homelessness, domestic violence, women's and children's health, early childhood education and foster care. The mission of JLM is to promote voluntarism, develop the potential of women and to improve communities through effective action and leadership of trained volunteers. Founded in 1926, its purpose is exclusively educational and charitable.

You can help the JLM continue its 88-year legacy of assisting those in need by making a gift to the Junior League of Miami Foundation.



EVERY GIFT COUNTS

Contributions of all amounts to the Junior League of Miami Foundation, Inc. are appreciated and embraced and can be named or anonymous.

Donations can be made anytime by mail or online through the JLMF website. There are numerous categories of cumulative gift recognition including the **1926 SOCIETY** which recognizes cumulative giving of \$1,926 and above to correspond with the JLM's founding in 1926. Donors who have reached this level and greater receive a commemorative pin in honor of their gift.

DONATION LEVELS ARE:

- **Developer of the Future** - \$50,000 and above
- **Architect of the Future** - \$25,000 to \$49,999
- **Designer of the Future** - \$10,000 to \$24,999
- **Pillar of the Future** - \$5,000 - \$9,999
- **1926 SOCIETY** - \$1,926 and above are recognized as 1926 Society Members
- **Merrick Contributor** - all gifts up to \$1,925

All donations will be listed and permanently recognized on the JLMF website.

WAYS TO GIVE

Keep these thoughts in mind when considering your donation:

- * Gifts of stocks and annuities are welcome as a way of supporting the JLMF.
- * Individual gifts may be doubled or tripled through your company's matching gift program so be sure to inquire with your company's human resources department.
- * Making a bequest in your will to the JLMF is one of the greatest gifts you can make. Donors who have made a Testamentary Gift to the JLMF become members of the **Hope Society** and are recognized with a special pin and designation on the website.

In addition to direct giving, gifts can be made and will be acknowledged

...In memory of a loved one

...In celebration of special events such as birthdays, anniversaries, births, graduations and special achievements

...In honor of or in recognition of an individual or entity

Because JLMF is a recognized 501(c)(3) organization, gifts may be eligible for a deduction on your income tax return.



A LEGACY OF COMMUNITY BUILDING

The JLMF is steward to more than \$1 million in assets and solely benefits the charitable volunteer efforts and initiatives of the Junior League of Miami. The JLM has helped establish numerous notable projects in Miami since its inception in 1926 including:

- The Children's Home Society
- The Miami Science Museum
- INN Transition North and South
- Coral Gables Merrick House
- The Family Resource Center
- Guardian Ad Litem

Additionally, the JLM has funded countless other non-profit organizations through volunteer hours and financial resources such as:

- Kristi House
- CHARLEE
- Camillus House
- Lotus House
- Therapy Dogs
- Miami Lighthouse for the Blind
- Casa Valentina

And many many more...visit our website to view the positive impact JLM has made on our magic city at www.jlmiami.org

STEWARDSHIP OF PRINCIPAL - SPECIAL CARE AND HANDLING

The JLMF's Board of Directors has the fiduciary responsibility of building and overseeing the Foundation's assets and making an annual contribution to the JLM. The JLMF Board realizes that JLMF donors are entrusting us with their gifts and we are committed to serving as honorable stewards of their donations. The JLMF Board members communicate closely with the JLM's executive committee and the JLMF's funds are managed by an independent investment firm which is reviewed regularly.



AN EXCEPTIONAL WOMAN CONTINUES TO INSPIRE PHILANTHROPY

A TRIBUTE TO RONNI WEKSLER BERMONT

Among those to envision the need to build for the future was Ronni Weksler Bermont. Ronni served as the Junior League President in 1989 and was an inspiration through her life of dedicated service until her untimely death in 1995. She championed JLM membership diversity and, with her shared leadership style, sought to include all voices for those seeking to improve the lives of those most in need and at risk. The **Ronni W. Bermont Fund for Community Projects**, named in her honor, is one of several funds managed under the JLMF. You may designate your gift to be deposited directly into this fund within the JLMF. It is a permanent endowment with the earnings restricted for projects.

To learn more about the **1926 SOCIETY** and other giving levels, please visit our website at www.JLMFoundation.org or contact us at Foundation@jlmiami.org.

Thank you for helping ensure our financial future!



The Junior League of Miami Foundation, Inc.
713 Biltmore Way, Coral Gables, FL 33134

305-443-0160 • www.jlmfoundation.org